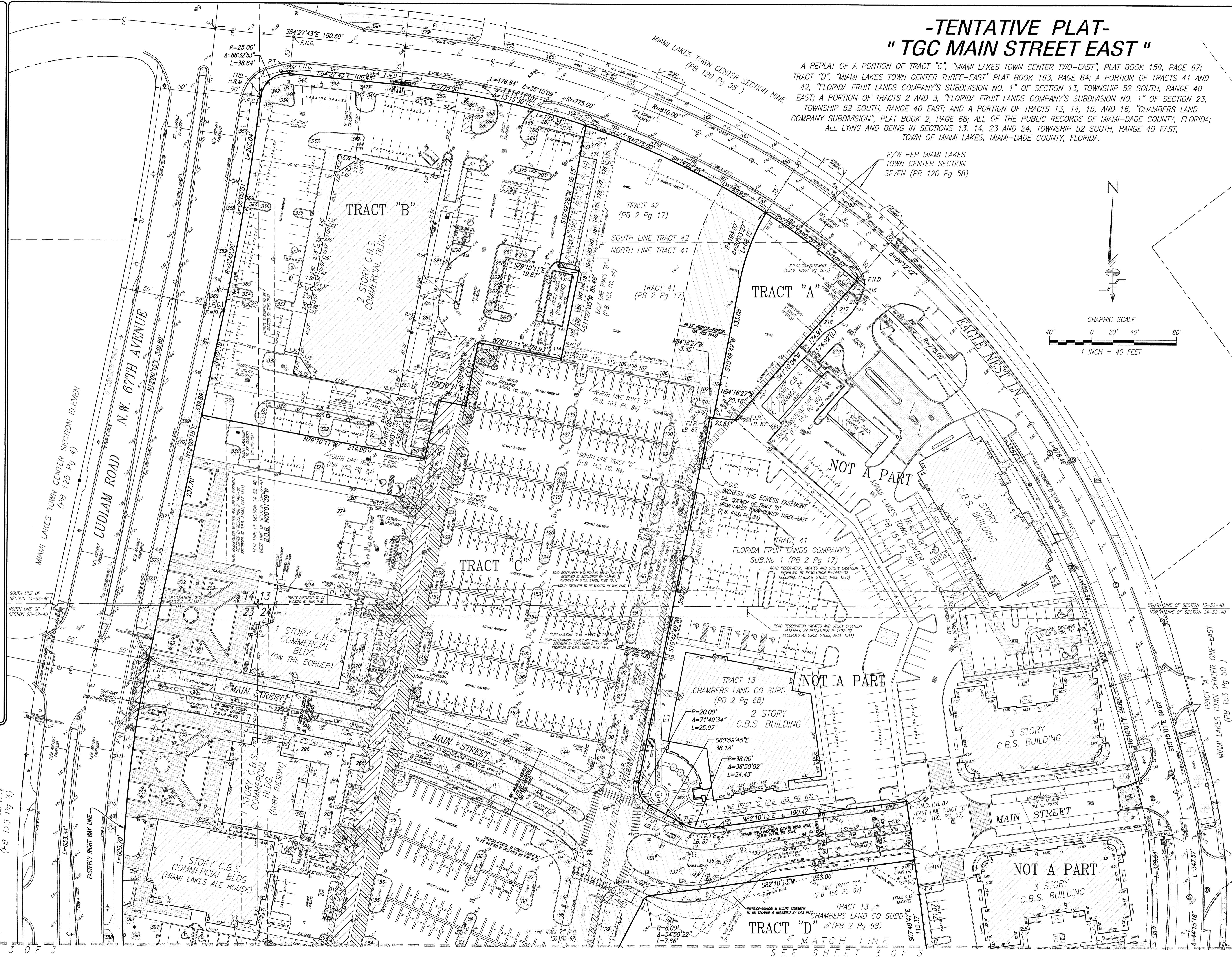
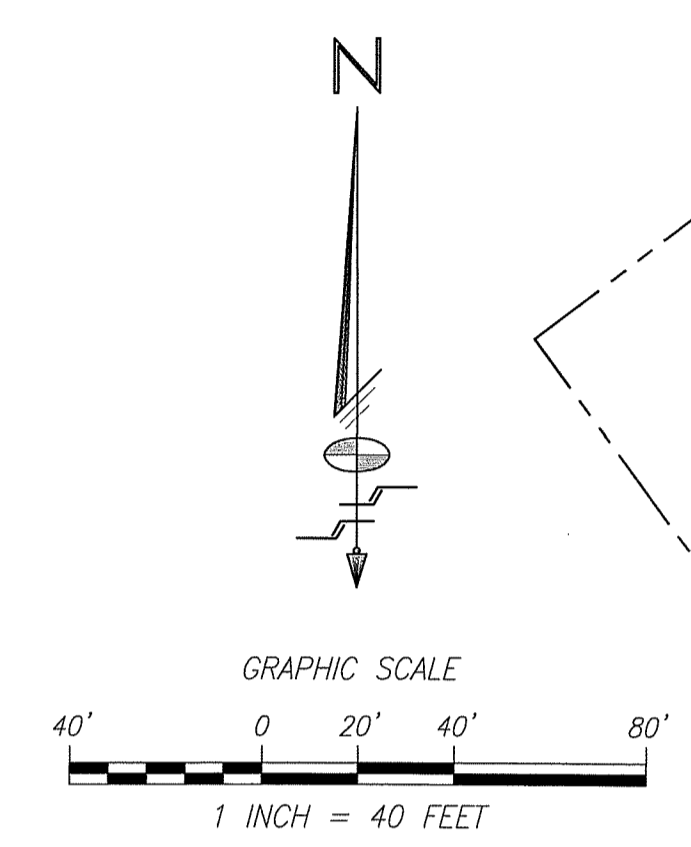


- GENERAL LEGEND:**
- AERIAL TARGET
 - ALUMINUM LIGHT POST (SINGLE)
 - ALUMINUM LIGHT POST (DOUBLE)
 - ALUMINUM LIGHT POST (TRIPLE)
 - ALUMINUM LIGHT POST (ROAD)
 - ANCHOR/CUT WIRE
 - BACKFLOW PREVENTER ASSEMBLY
 - CABLE TELEVISION BOX
 - CATCH BASIN
 - CENTERLINE
 - CHECK VALVE ASSEMBLY
 - CIRCULAR DRAIN
 - COLUMN (CIRCULAR)
 - COLUMN (SQUARE)
 - CONCRETE LIGHT POLE
 - CONCRETE LIGHT POLE (DOUBLE)
 - CONCRETE POWER POLE
 - CONTROL POINT
 - CURB INLET
 - DOUBLE DETECTOR CHECK VALVE
 - ELECTRIC BOX
 - ELECTRIC HAND HOLE
 - ELECTRIC OUTLET
 - ELEVATIONS (SEE NOTES FOR DATUM)
 - FIRE HYDRANT
 - FLAGPOLE
 - FLOW LINE
 - FORCE MAIN MANHOLE
 - FORCE MAIN VALVE
 - F.P.L. ELECTRIC MANHOLE
 - F.P.L. TRANSFORMER PAD
 - F.P.L. TRANSMISSION POLE
 - GAS MANHOLE
 - GAS METER
 - GAS PUMP
 - GAS VALVE
 - GREASE TRAP MANHOLE
 - GROUND LIGHTING
 - GUARD POST
 - IRRIGATION HAND HOLE
 - IRRIGATION VALVE
 - MAILBOX
 - MONITOR WELL
 - MONUMENT LINE
 - OVERHEAD WIRES (APPROXIMATE)
 - P-5 INLET
 - P-6 INLET
 - PARKING METER
 - PEDESTRIAN CROSSING SIGNAL
 - PERMANENT REFERENCE MONUMENT
 - POST INDICATOR VALVE
 - VACUUM BREAKER ASSEMBLY
 - PROPERTY LINE
 - SANITARY SEWER CLEANOUT
 - SANITARY SEWER MANHOLE
 - SHIMMER CONNECTION
 - SIGN POST
 - SPRINKLER PUMP
 - STANDPIPE
 - STORM SEWER MANHOLE
 - STREET LIGHT HAND HOLE
 - SINGLE INLET
 - TELEPHONE BOX (SOUTHERN BELL)
 - TELEPHONE HAND HOLE
 - TELEPHONE MANHOLE (SO. BELL)
 - TELEPHONE PAYPHONE
 - TRAFFIC HAND HOLE
 - TRAFFIC UTILITY BOX
 - TRAFFIC SIGNAL POST
 - UNDERGROUND UTILITY MARKER
 - UNKNOWN UTILITY MANHOLE
 - UNKNOWN UTILITY HAND HOLE
 - WATER MANHOLE
 - WATER METER
 - WATER VALVE
 - WOOD LIGHT POLE
 - WOOD POWER POLE
 - HANDICAP PARKING
 - STROLLER PARKING
- ABBREVIATIONS:**
- B.O.B. denotes BASIS OF BEARINGS
 - P.C.E. denotes POINT OF REVERSE CURVE
 - R denotes RADIUS
 - L denotes LENGTH
 - Δ denotes ARC DISTANCE
 - P.C.P. denotes PERMANENT CONTROL POINT
 - P.R.M. denotes PERMANENT REFERENCE MONUMENT
 - P.B. denotes PLAT BOOK
 - P.C. denotes POINT OF COMMENCEMENT
 - P.O.B. denotes POINT OF BEGINNING
 - O.U.W. denotes OVERHEAD UTILITY WIRES
 - O.R.B. denotes OFFICIAL RECORDS BOOK
 - P.C. denotes POINT OF CURVATURE
 - C.B.S. denotes CONCRETE BLOCK STRUCTURE
 - C.C. denotes CONCRETE
 - C.F. denotes CHAINLINK FENCE
 - W.P. denotes WOOD PIPE
 - F.P.L. denotes FOUND IRON PIPE
 - S.I.P. denotes SET IRON PIPE & LB-87 CAP
 - F.N.D. denotes FOUND NAIL & BRASS DISC
 - S.A.V. denotes SET 1/2" NAIL & BRASS DISC
 - C.L. denotes CLEAR
 - C.I.P. denotes CORRUGATED IRON PIPE
 - D denotes DEED DISTANCE
 - L denotes DISTANCE OF LEGAL DESCRIPTION
 - M denotes MEASURED DISTANCE
 - R denotes RECORD OR PLATTED DISTANCE
- PAINTED UNDERGROUND UTILITIES (APPROXIMATE)**
- COMMUNICATION
 - DRAIN
 - ELECTRIC
 - FORCE MAIN
 - IRRIGATION
 - HYDRAULIC
 - NATURAL GAS
 - SANITARY SEWER
 - WATER



**-TENTATIVE PLAT-
" TGC MAIN STREET EAST "**

A REPLAT OF A PORTION OF TRACT "C", "MIAMI LAKES TOWN CENTER TWO-EAST", PLAT BOOK 159, PAGE 67; TRACT "D", "MIAMI LAKES TOWN CENTER THREE-EAST" PLAT BOOK 163, PAGE 84; A PORTION OF TRACTS 41 AND 42, "FLORIDA FRUIT LANDS COMPANY'S SUBDIVISION NO. 1" OF SECTION 13, TOWNSHIP 52 SOUTH, RANGE 40 EAST; A PORTION OF TRACTS 2 AND 3, "FLORIDA FRUIT LANDS COMPANY'S SUBDIVISION NO. 1" OF SECTION 23, TOWNSHIP 52 SOUTH, RANGE 40 EAST; AND A PORTION OF TRACTS 13, 14, 15, AND 16, "CHAMBERS LAND COMPANY SUBDIVISION", PLAT BOOK 2, PAGE 68; ALL OF THE PUBLIC RECORDS OF MIAMI-DADE COUNTY, FLORIDA; ALL LYING AND BEING IN SECTIONS 13, 14, 23 AND 24, TOWNSHIP 52 SOUTH, RANGE 40 EAST, TOWN OF MIAMI LAKES, MIAMI-DADE COUNTY, FLORIDA.



MATCH LINE
SEE SHEET 3 OF 3

MATCH LINE
SEE SHEET 3 OF 3

REVISIONS

NO.	DATE	BY	DESCRIPTION
1	07/17/16	2002/JS	ISSUE FOR REVIEW OF TITLE

TENTATIVE PLAT

TGC MAIN STREET EAST

Sections 13, 14, 23, & 24, Township 52 South, Range 40 East
Town of Miami Lakes, Miami-Dade County, Florida

Schwabke Shubin & Associates, Inc.
LAND PLANNERS
ENGINEERS
LAND SURVEYORS
3246 CORPORATE WALK, MIAMI, FLORIDA 33122
TEL: (305) 435-2010 FAX: (305) 438-2888

CERTIFICATE OF AUTHORIZATION No. LB-87

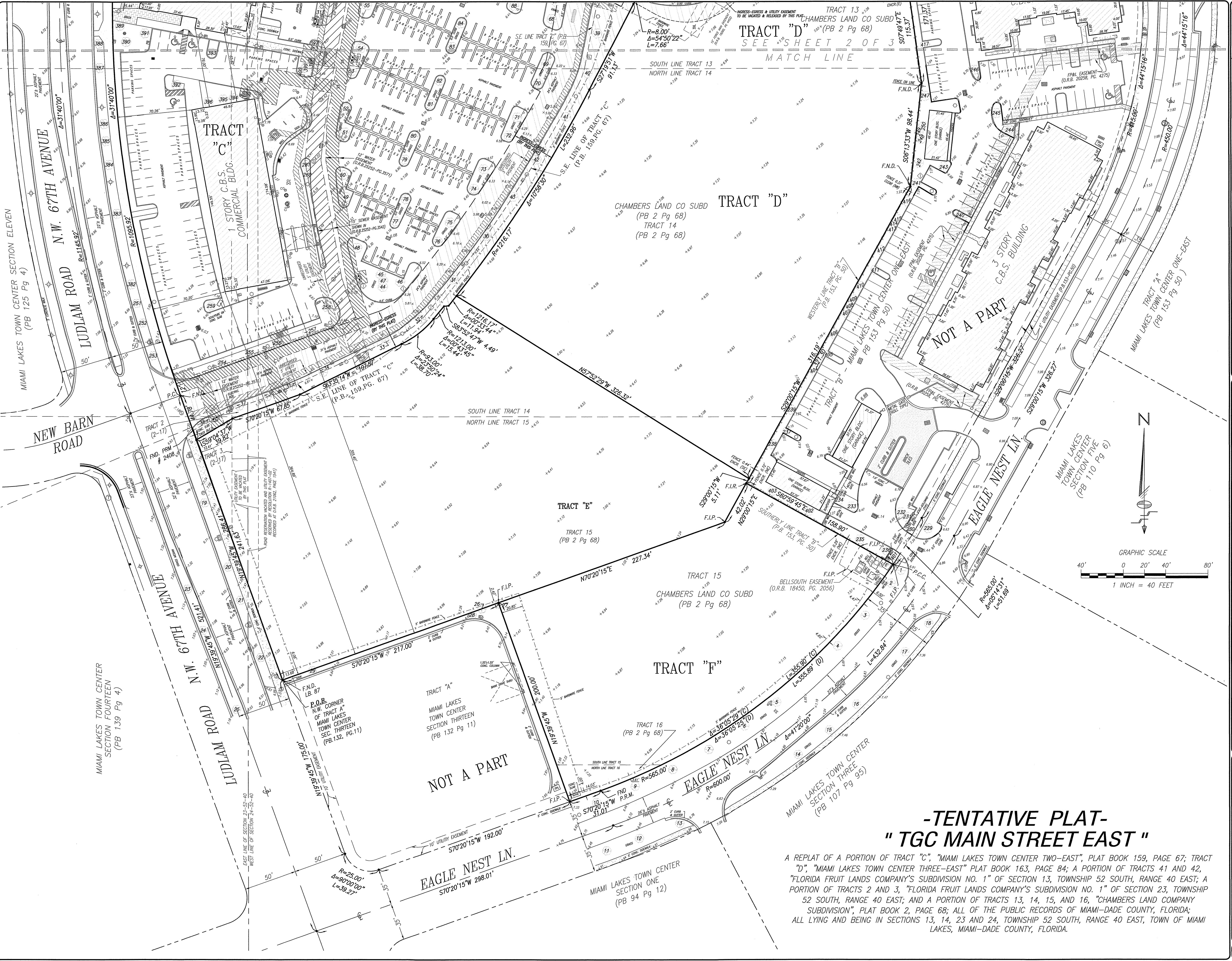
Checked By: M.S.J. Date: 08-09-2016
Drawn By: E.M. Date: 01-05-2016
Order No. 200558 F.B. No. 2020-U
Scale: AS SHOWN

File No. ML-1135-A
Sheet 2 of 4

NOTE: This sketch is not valid unless it bears the signature and the original cabinet seal of a Florida licensed surveyor and mapper.

This is a "Boundary Survey."

- GENERAL LEGEND:**
- AKR: TARGET
 - ALUMINUM LIGHT POST
 - ALUMINUM LIGHT POST (SINGLE)
 - ALUMINUM LIGHT POST (DOUBLE)
 - ALUMINUM LIGHT POST (TRIPLE)
 - ALUMINUM LIGHT POST (QUAD)
 - ANCHOR/GUY WIRE
 - BACKFLOW PREVENTER ASSEMBLY
 - CABLE TELEVISION BOX
 - CATCH BASIN
 - CENTERLINE
 - CHECK VALVE ASSEMBLY
 - CIRCULAR GRAB
 - COLUMN (CIRCULAR)
 - COLUMN (SQUARE)
 - CONCRETE LIGHT POLE
 - CONCRETE LIGHT POLE (DOUBLE)
 - CONCRETE POWER POLE
 - CONTROL POINT
 - CURB INLET
 - DOUBLE DETECTOR CHECK VALVE
 - ELECTRIC BOX
 - ELECTRIC HAND HOLE
 - ELECTRIC OUTLET
 - ELEVATIONS (SEE NOTES FOR DATUM)
 - FIRE HYDRANT
 - FLAPGATE
 - FLOW LINE
 - FORCE MAIN MANHOLE
 - FORCE MAIN VALVE
 - F.P.L. ELECTRIC MANHOLE
 - F.P.L. TRANSFORMER PAD
 - F.P.L. TRANSFORMER POLE
 - GAS MANHOLE
 - GAS METER
 - GAS PUMP
 - GAS VALVE
 - GRASS TRAP MANHOLE
 - GROUND LIGHTING
 - GUARD POST
 - IRRIGATION HAND HOLE
 - IRRIGATION WELL
 - MAILBOX
 - MONITOR WELL
 - MONUMENT LINE
 - OVERHEAD WIRES (APPROXIMATE)
 - P-5 INLET
 - P-6 INLET
 - PARKING METER
 - PEDESTRIAN CROSSING SIGNAL
 - PERMANENT REFERENCE MONUMENT
 - POST INDICATOR VALVE
 - VACUUM BREAKER ASSEMBLY
 - PROPERTY LINE
 - SANITARY SEWER CLEANOUT
 - SANITARY SEWER MANHOLE
 - SIAMSE CONNECTION
 - SKIN POST
 - SPRINKLER PUMP
 - STANDPIPE
 - STORM SEWER MANHOLE
 - STREET LIGHT HAND HOLE
 - SWALE INLET
 - TELEPHONE BOX (SOUTHERN BELL)
 - TELEPHONE HAND HOLE
 - TELEPHONE MANHOLE (SO. BELL)
 - TELEPHONE PAYPHONE
 - TRAFFIC HAND HOLE
 - TRAFFIC UTILITY BOX
 - TRAFFIC SIGNAL POST
 - UNDERGROUND UTILITY MARKER
 - UNKNOWN UTILITY MANHOLE
 - UNKNOWN UTILITY HAND HOLE
 - WATER MANHOLE
 - WATER METER
 - WATER VALVE
 - WOOD LIGHT POLE
 - WOOD POWER POLE
 - HANDICAP PARKING
 - STROLLER PARKING
- ABBREVIATIONS:**
- B.O.B. denotes BASIS OF BEARINGS
 - P.C.R. denotes POINT OF REVERSE CURVE
 - B. denotes BOUNDARY
 - Δ denotes DELTA ANGLE
 - R denotes RADIUS
 - L denotes TANGENT DISTANCE
 - P.C. denotes POINT OF COMMENCEMENT
 - P.M. denotes PERMANENT MONUMENT
 - P.S. denotes PLAT BOOK
 - P.C. denotes POINT OF COMMENCEMENT
 - P.O.B. denotes POINT OF BEGINNING
 - O.H.W. denotes OVERHEAD UTILITY WIRES
 - O.R.B. denotes OFFICIAL RECORDS BOOK
 - P.O.C. denotes POINT OF CURVATURE
 - C.B.S. denotes CONCRETE BLOCK STRUCTURE
 - C.N.C. denotes CHAINING FENCE
 - W.F. denotes WOOD FENCE
 - F.I.P. denotes FOUND IRON PIPE
 - S.I.P. denotes SET IRON PIPE & 18-87 CAP
 - F.A.D. denotes FOUND NAIL & BRASS DISC
 - S.N.D. denotes SET 18-87 NAIL & BRASS DISC
 - C.L. denotes CLEAR
 - ENCR. denotes ENCROACHMENT
 - CP denotes CORRUGATED IRON PIPE
 - D denotes DEED DISTANCE
 - M denotes MEASURED DISTANCE
 - R denotes RECORD OR PLATED DISTANCE
- PAINTED UNDERGROUND UTILITIES (APPROXIMATE):**
- COMM - COMMUNICATION
 - DRAN - DRAINAGE
 - EL - ELECTRIC
 - FM - FORCE MAIN
 - IRR - IRRIGATION
 - NAT - NATURAL GAS
 - SM - SANITARY SEWER
 - WATER



**- TENTATIVE PLAT -
" TGC MAIN STREET EAST "**

A REPLAT OF A PORTION OF TRACT "C", "MIAMI LAKES TOWN CENTER TWO-EAST", PLAT BOOK 159, PAGE 67; TRACT "D", "MIAMI LAKES TOWN CENTER THREE-EAST" PLAT BOOK 163, PAGE 84; A PORTION OF TRACTS 41 AND 42, "FLORIDA FRUIT LANDS COMPANY'S SUBDIVISION NO. 1" OF SECTION 13, TOWNSHIP 52 SOUTH, RANGE 40 EAST; A PORTION OF TRACTS 2 AND 3, "FLORIDA FRUIT LANDS COMPANY'S SUBDIVISION NO. 1" OF SECTION 23, TOWNSHIP 52 SOUTH, RANGE 40 EAST; AND A PORTION OF TRACTS 13, 14, 15, AND 16, "CHAMBERS LAND COMPANY SUBDIVISION", PLAT BOOK 2, PAGE 68; ALL OF THE PUBLIC RECORDS OF MIAMI-DADE COUNTY, FLORIDA; ALL LYING AND BEING IN SECTIONS 13, 14, 23 AND 24, TOWNSHIP 52 SOUTH, RANGE 40 EAST, TOWN OF MIAMI LAKES, MIAMI-DADE COUNTY, FLORIDA.

REVISIONS

No.	Date	By	Remarks
1	02/21/24	ML	ISSUE, DIMENSIONS & SURVEY DATA OF TITLE

SCALE: 1 INCH = 40 FEET

GRAPHIC SCALE: 0 20' 40' 80'

PLANNING & ENGINEERING: **Schreffler, Shisbin & Associates, Inc.**
2500 CORPORATE WAY, AURORA, FLORIDA 32835
TEL: (904) 435-7010 FAX: (904) 438-3888

CERTIFICATE OF AUTHORIZATION: No. LP-87

Drawn By: E.M. Date: 08-09-2016
Checked By: M.S.A. Date: 08-09-2016
Order No. 200558 F.B. No. 2020-U
Scale: AS SHOWN Sheet 3 of 4 Sheet(s)

File No. **ML-1135-A**

This is a "Boundary Survey."

TENTATIVE PLAT
TGC MAIN STREET EAST
Sections 13, 14, 23, & 24, Township 52 South, Range 40 East
Town of Miami Lakes, Miami-Dade County, Florida

ML-1135-A

