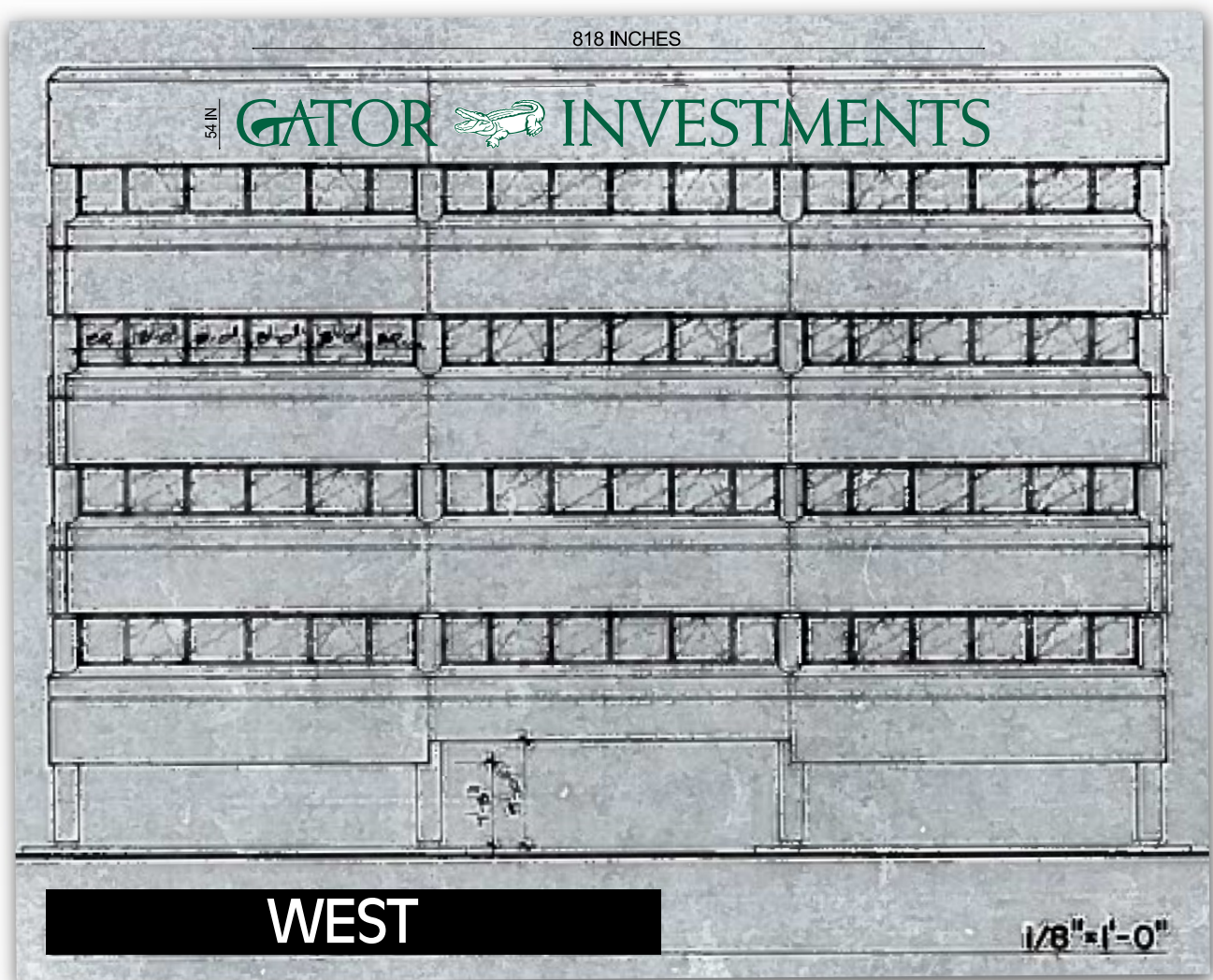


Building size - 101' x 70' = 7070 SQ FT
ALLOWABLE - 7070 x 10% = 707 sq ft.
PROPOSED - 322" x 54" = 120.75 sq ft



Building size - 101' x 70' = 7070 SQ FT
ALLOWABLE - 7070 x 10% = 707 sq ft.
PROPOSED - 818" x 54" = 306.75 SQ FT