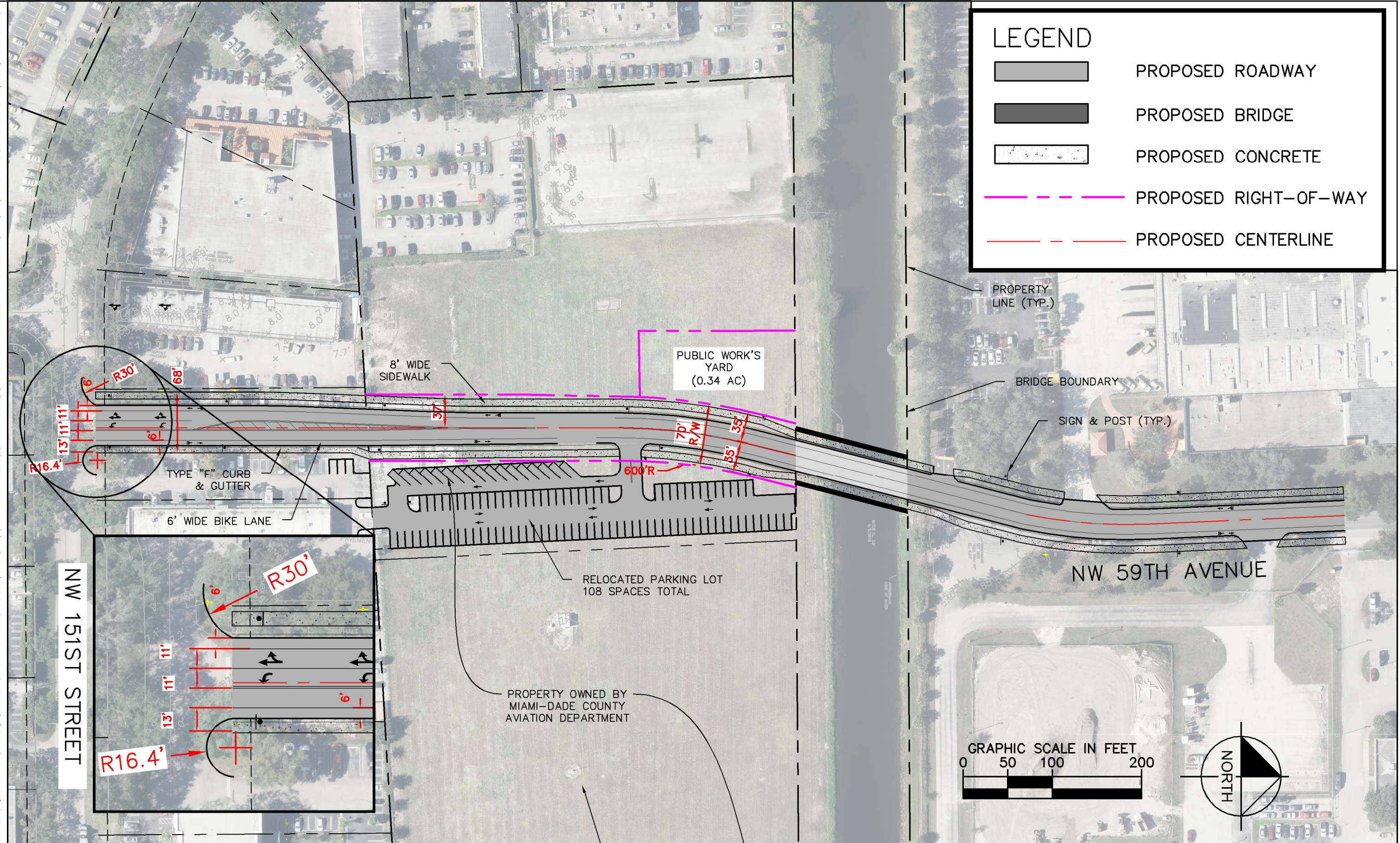


This document, together with the concepts and designs presented herein, is intended only for the specific purpose and client for which it was prepared. Review of and reliance on this document without written authorization and adaptation by Kimley-Horn and Associates, Inc. shall be without liability to Kimley-Horn and Associates, Inc.



No.	REVISIONS	DATE	BY

Kimley»Horn

2018 KIMLEY-HORN AND ASSOCIATES, INC.
600 North Pine Island Road, Suite 450, Plantation, FL 33324
PHONE (954) 535-5100
WWW.KIMLEY-HORN.COM CA 00000696

KHA PROJECT
044533197

DATE
SEPT. 2018

SCALE AS SHOWN

DESIGNED BY

DRAWN BY

CHECKED BY

TOWN OF MIAMI LAKES
TRANSPORTATION IMPROVEMENTS
CONCEPTUAL GRAPHICS

NW 59TH AVENUE EXTENSION
PROPOSED RIGHT-OF-WAY
OPTION 2

SHEET NUMBER
RW-2